

URAWA URAWA CORPORATION

— *Overwhelming Imagination* —

PRODUCTS CATALOG
Vol.04



圧倒的な、創造力。 Overwhelming Imagination. Pride of JAPAN.

This is ability of made in Japan.

The other companies cannot mimic, the technology that had cultivated it over many years was packed, and the nail machine that boasts of the best number of sales in the world.

The high quality that can be called the feature of made in Japan and high power charm professional nail artists all over the world.

Overwhelming Imagination arises from this machine.

URAWA G5



This newest machine is designed as the top-quality nail machine. The handpiece is made from metal and it is shiny and beautiful. This elegant machine fits your gorgeous nail salon. Also, the flat type on-off and forward-reverse switch is equipped on the controller, and it is very comfortable to use the machine more than ever. We confidently introduce this nail machine as your partner for nail care.

URAWA G5 SPEC

G5 Controller

Dimensions : 117 (W)×147 (D)×89 (H) mm

Weight : 1.4 Kg

Output : DC 2.2~30 V

G5 Handpiece

Dimensions : \varnothing 23.6 (MAX)×129 (L) mm

Weight : 180 g (not including motor cord)

MAX Speed : 28,000 rpm

ACCESSORIES (VC70)



OPTION





Color variation



White



Metallic Pink



Black

Extremely portable, our micro motor system only weight 250g / 0.55lb. It is possible to carry the unit any place you wish to use it. A two (2) hour charge allows approximately 3 hours of operation. The system may also be used while the battery is being charged.

URAWA G3 SPEC

G3 Controller

Dimensions: 65 (W) x 137 (D) x 37 (H) mm

Weight: 250g

Output: DC2 ~ 12V

G3 Handpiece

Dimensions: \varnothing 24.2 (MAX) x 129 (L) mm

Weight: 160g (not including motor cord)

MAX Speed : 20,000 rpm

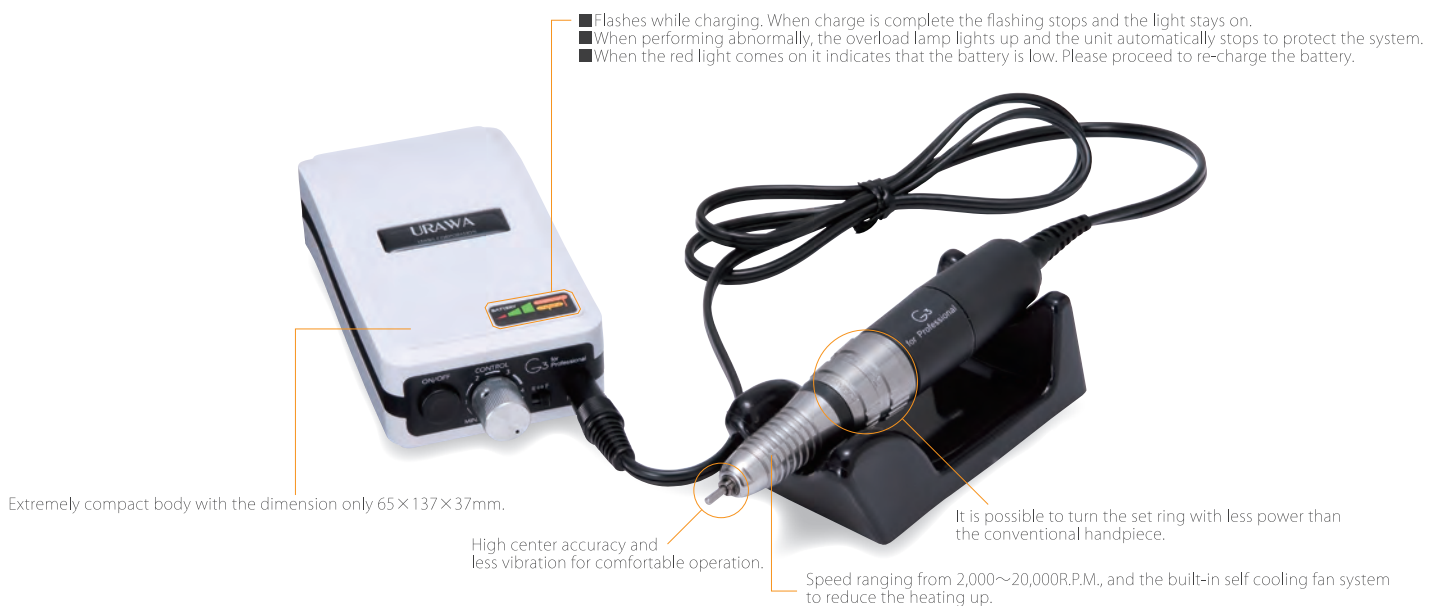
OPTION



G5 High Performance Machine



G3 for Professional





Color variation



White



Black

Extremely slim size and lightweight micro motor system only weight 130g. A two (2) hour charge allows approximately 3 hours of operation. The system may also be used while the battery is being charged.

URAWA G1 SPEC

G1 Controller

Dimensions: 61 (W) X 125 (D) X 21 (H) mm

Weight: 130g

Output: DC3V ~ DC9V

G1 Handpiece

Dimensions: 129 mm X \varnothing 24.2 (MAX)

Weight: 160g (not including motor cord)

Max speed: 15000rpm

OPTION



Upower UP200 / UG12



The UP200 has a powerful micro motor handpiece UG12 constructed of durable stainless steel, with sealed bearing that make it unbelievably smooth, quiet and powerful when operating.

Upower UP200 / UG12 SPEC

UP 200

Dimensions : 130 (W) × 132 (D) × 87 (H) mm

Weight : 1.4 Kg

Output : DC 2~20 V

UG 12

Dimensions : \varnothing 23 (MAX) × 130 (L) mm

Weight : 160 g (not including motor cord)

MAX Speed : 20,000 rpm

Upower SUP200 / SUG12



The SUPER UP200, allows the operator to adjust the speed via the built-in slide volume and foot operated speed cotroller. The handpiece has extremely light weight, and excellent balance. The operator feels more comfortable than ever.

Upower SUP200 / SUG12 SPEC

SUP 200

Dimensions : 130 (W)×162 (D)×85 (H) mm
Weight : 1.5 Kg
Output : DC 3~30 V

SUG 12

Dimensions : \varnothing 24 (MAX)×128 (L) mm
Weight : 160 g (not including motor cord)
MAX Speed : 25,000 rpm

OPTION (VC60)



Upower UP220 / ND7



The compact machine fits neatly on your work station.
And the minimum speed is 2,000rpm for accommodating all kinds of operations.

Upower UP220 / ND7 SPEC

UP 220

Dimensions : 80 (W) × 145 (D) × 108 (H) mm
Weight : 950 g
Output : DC 3~30 V

ND 7

Dimensions : \varnothing 24 (MAX) × 136 (L) mm
Weight : 165 g (not including motor cord)
MAX Speed : 20,000 rpm

Upower NP300A / NF32A



7 different colors are lined up !! You can pick up your favorite color according to your taste or the interior design of your salon. (Unadaptable to cuticle pusher)

Upower NP300A / NF32A SPEC

NP 300 A

Dimensions : 120 (W) × 140 (D) × 105 (H) mm

Weight : 1.1 kg

Output : DC 3~30 V

NF 32 A

Dimensions : \varnothing 26.4 (MAX) × 133 (L) mm

Weight : 170 g (not including motor cord)

MAX Speed : 20,000 rpm

Techniques & Attachment

※ The procedure might be different according to the manufacturer, the school, and the salon.

Techniques

- Backfills using barrel carbide bit.
- Backfills using oval carbide bit.
- Nail art (Sculpting a design).
- Nail art.
- Application to the underside of the nail.
- Removing acrylics.
- Gel repair.
- Nail art.
- Hand treatment.
- Foot treatment.

Attachment

Explanation of various techniques.

■ Backfills using barrel carbide bit.

Cut along the new smile line you would make.
※The angle of the bit is the important point.



Press the product into place with flat side of the brush.



Make the thickness without damaging the natural nail.



Wipe the smile line.



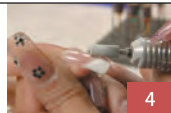
Gently move the bit using circular motion.



Level the thickness of the free edge.



Polish up the smile line using the edge of the bit.



Apply a ball of pink powder on the nail bed.



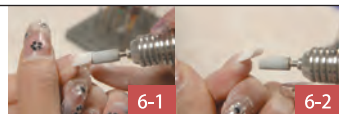
Thin the free edge until it becomes same thickness as smile line.



Smooth the surface of the nail with the brush.



To refine a C-curve, use the roundness of the bit.



Refine the nail shape with a file.



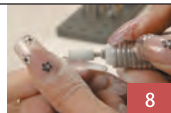
Move the bit along the cuticle line, remove the lifted products at this moment.



Adjust the side straight.



Around the cuticle area move both the bit and client's finger for fine operation.



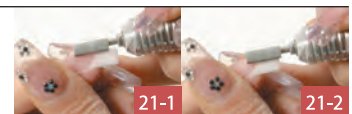
From the cuticle area smooth the surface of the nail using the bit.



File the whole parts of the nail.



The nail shape with gentle pressure.



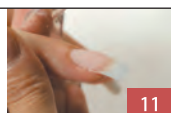
File the side of the nail finely.



Smooth the nail with a buffer.



Sterilize the nail and apply a primer to the natural nail.



Remove any dust on the cuticle area and the nail wall with a brush.



Place a ball with a 1- to 1 ratio liquid to powder in the center of nail tip.



Apply acrylic sealer to both the face and the back to finish the nail.



■ Backfills using oval carbide bit.

Make a smile line using the round tip of bit.



Make a smile line with one motion.



Move the bit with circular motion without damaging natural nail.



Thin the free edge same as smile line.



Refine the C-curve using the round tip.



Move the bit along with cuticle line. Please remove lifting part at the same time.



File the nail.



Shape the nail with hand file.



Sanitize the natural nail and apply primer to whole part.



Apply acrylic powder on the nail bed.



Make new smile line with the acrylic powder.



Apply pink powder on the nail bed.



Quickly lay over from cuticle to edge.



Smooth the surface with brush.



File the sidewall and edge.



Shape the nail with electric file.



Shape the nail with gentle pressure.



Dust the nail with acrylic brush.



Buff the nail after it is shaped.



Finish with applying acrylic sealer on the top and back side of the nail.



Explanation of various techniques.

■ Nail art (Sculpting a design).

Apply white powder on the nail bed to have the best result on design pattern.



Have few color powders ready.



Apply color powder on the nail bed equally.



Apply other colors on the nail bed to have some gradation effect.



Shape the desired design pattern by using cone square bit (ST38-018).



Shaping a rose as an example.



Design is finished.



Coat the nail with acrylic powder.



File the nail.



Apply the top coat.



Finished.



■ Nail art.

Shape the length of nail tip with carbide barrel bur.



Refine the C-curve.



Completed.



Shape the design with drill bit (ST203-012).



Shaping a flower as an example.



Glue the nail tip.



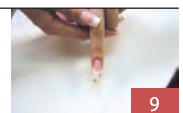
Place the stone in the center of flower.



Coat the nail with Gel.



Dry the nail with UV light nail dryer.



■ Application to the underside of the nail.

To refine the C-curve, use the roundness of the bit.



1-1



1-2



1-3

With client's palm facing up, place the bit on the underside of the free edge and move the bit back and forth until it gets same thickness as tip of the nail is.



2

Polish up the side using a small cone or barrel bit.



3

Be careful not to thin the side of the sculpture too much.



4

Remove any dust.



5

■ Removing acrylics.

Shorten the nail taking care not to cut hyponychium.

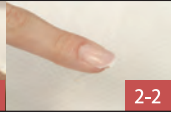


1

Cut both sides of the nail using clipper.



2-1



2-2

Make many ridges at the tip of the nail for soaking off the nail finely.



3

Confirm the thickness of the ridge watching C-curve.



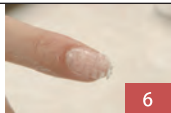
4

To get more effects, cut the nail aslant and sideways. However make sure not to damage natural nails.



5

Making the trenches on the nail gets acetone soak into the nail easier, and it speeds up the removal.



6

Fill the hot water in a large bowl. Place a smaller bowl filled with acetone and cuticle oil with 2- to 1 ratios into the larger bowl. Then place client's nails in the bowl about 5 minutes.



7

Removal enhancements using pusher and others.



8

Smooth the surface of the nail with a file.



9

Polish up the nail with a buffer.



10

After removing any dust, cover the nail with nail hardner then apply cuticle oil on the cuticles and skin around the nails to help protect the skin.



11

■ Gel repair.

Remove the lifting area with sanding band.



1

File the whole surface with gentle pressure.



2-1



2-2

Smooth the nail with the buffer.



3

Apply gel for repair.



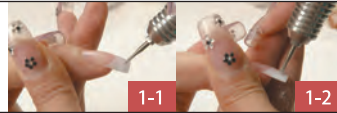
4

Explanation of various techniques.

■ Nail art.

Hollowing

Make a hole at the center of where you would like to hollow out.



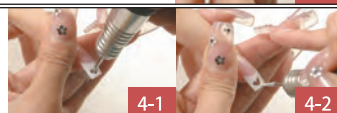
Create the shape from the hole you made.



Move the bit little by little taking care not to damage hyponychium.



Change the bit to shape tip bit then finish creating shape.



Remove any dust.



Apply the sparkle powder around the hole to finish the art.



Piercing

Decide the place to drill a hole.



Hold the client's finger firmly for avoiding slitting out. Then drill a hole with the bit of perpendicular way against the nail.



Pitting

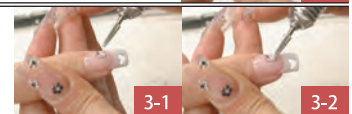
Measure the size of the stone you would place.



Draw a line as a guide for where to drill on the nail.



Drill little by little. Make sure not to drill outside of the line.



Be careful not to damage natural nail.



Place glue into the hole.



Place the stone into the hole and let glue dry completely. Then coat the entire design in nail art sealer to protect the design.



Put a charm into the hole*.

※Be careful not to drill a hole at the end of the nail tip. It causes nail crack.



■ Hand treatment.

Apply cuticle remover to cuticle area to soften cuticles.



Massage the cuticle area to soak well.



Place client's finger into a manicure bowl filled with warm water to soften cuticles more.



Dry the hand with a towel, and then push back cuticles with cuticle pusher using circular motion.



Move the pusher gently from the side to center.



An orangewood stick with a cotton tip also works instead of a cuticle pusher.



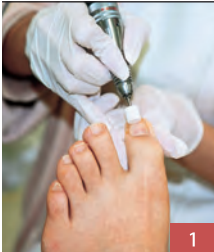
Remove any loose skin and hang-nail with a nipper and a gauze wipe.



Remove any dust with a brush.



Foot treatment.



1.White point (Pedicure bit)

Smooth the nail of the big toe.
Instruction : Keep the bit flat on the nail.
Correct speed : 5,000~10,000rpm

<Caution> : Be careful not to push the bit to nail strongly, and avoid touching skin around the nail. Move the bit only from right to left while the machine is rotating with clockwise direction.

1



2.Pink point (Pedicure bit)

Use this bit for smoothing nails except for the big toe.
Instruction : Keep the bit flat on the nail.
Correct speed : 5,000~15,000rpm

<Caution> : Be careful not to push the bit to nail strongly, and avoid touching skin around the nail. Move the bit only from right to left while the machine is rotating with clockwise direction.

2



3.Pedicure skin bit (small)

Remove any rough, dry skin around the nails.
Instruction : Use the bit with gentle pressure.
Correct speed : 10,000~20,000rpm

<Caution> : Be careful not to press the bit strongly to the nail. Move the bit only from right to left while the machine is rotating with clockwise direction.

3



4.Pedicure skin bit (medium)

Remove corns and calluses around the toe.
Instruction : Use the bit from various directions.
Correct speed : 5,000~15,000rpm

<Caution> : Be careful not to push the bit to nail strongly, and avoid touching skin around the nail. Move the bit only from right to left while the machine is rotating with clockwise direction.

4



5.Cap sander (small : coarse)

Remove corns and calluses finely.
Instruction : Use the round tip of cap sander for removal.
Correct speed : 10,000~20,000rpm

<Caution> : Be careful not to press it strongly. Leave some hard skin to avoid injury.

5



6.Cap sander (small : fine)

After the operation of #5, smooth the skin.
Instruction : Use the side face of cap sander for removal.

<Caution> : Be careful not to press it strongly. Leave some hard skin to avoid injury.

6



7.Pedicure skin bit (large : extra large)

This bit is ideal for removing heavy calluses.
Instruction : Move the bit to the direction following the arrow.
Correct speed : 10,000~20,000rpm

<Caution> : Be careful not to operate on the same part of the foot for a long time. Leave some hard skin for avoiding injury.

7



8.Cap sander (medium : coarse)

After the operation of #7, use this cap sander to make the skin smooth.
Instruction : Move the cap sander only to the same direction with gentle pressure.
Correct speed : 5,000~10,000rpm

<Caution> : Be careful not to operate on the same part of the foot for a long time. Leave some hard skin for avoiding injury.

8



9.Cap sander (medium : fine)

After the operation of #5, smooth the foot further more with this cap sander.
Instruction : Move the cap sander only to the same direction with gentle pressure.

<Caution> : Be careful not to operate on the same part of the foot for a long time. Leave some hard skin for avoiding injury.

9

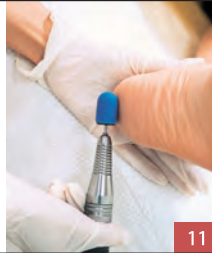


10.Cap sander (large : coarse)

Use this cap sander to remove rough, dry skin of the heel.
Instruction : Move the cap sander only to the same direction with gentle pressure.
Correct speed : 2,000~8,000rpm

<Caution> : Be careful not to operate on the same part of the foot for a long time. Leave some hard skin for avoiding injury.

10



11.Cap sander (large : fine)

After the operation of #10 smooth the heel further more with this cap sander.
Instruction : Move the cap sander only to the same direction with gentle pressure.

<Caution> : Be careful not to operate on the same part of the foot for a long time. Leave some hard skin for avoiding injury.

11

Application area of Cap sander.

























S
Coarse → Fine

M
Coarse → Fine

L
Coarse → Fine

Attachment.

Attachment for nail.

	<p>Large barrel Carbide bit</p> <ul style="list-style-type: none"> Fine C 1701 Medium C 1702 Coarse C 1703 <p>Large barrel white silver bit</p> <ul style="list-style-type: none"> Fine C 1701 W Medium C 1702 W Coarse C 1703 W X Coarse C 1704 W 	<p>Using these bits to shorten, shape and create the perfect C-curve and smile line for acrylics. Those carbide bits remove material fastest, and reduce heat. After the operation clean and sterilize the bits. Use it with gentle pressure when operating on the nail tip. Be careful not to file too much and please never touch skin. Use a speed ranging from 7,000~15,000rpm.</p>		<p>Large barrel diamond bit</p> <ul style="list-style-type: none"> Super fine D 1701 SF Fine D 1701 <p>Large barrel diamond bit</p> <ul style="list-style-type: none"> Medium D 1702 Coarse D 1703 Super coarse D 1704 <p>Small barrel diamond bit</p> <ul style="list-style-type: none"> Fine D 1705 Medium D 1706 Coarse D 1707 	<p>Use these bit to shorten, shape and create the perfect C-curve and smile line for acrylic. 2,000~4,000rpm</p> <p>Use it with gentle pressure when operating on the nail tip. Be careful not to file too much and please never touch skin. Use a speed ranging from 7,000 ~ 15,000rpm</p>
	<p>Large barrel Carbide bit (Gold)</p> <ul style="list-style-type: none"> Fine C 1701 G Medium C 1702 G Coarse C 1703 G 			<p>Cone diamond bit</p> <ul style="list-style-type: none"> Fine D 1709 Medium D 1710 Coarse D 1711 	<p>Use these bits to remove material from the underside of the nail and create C-curve. Also, ideal for drill a hole for mounting rhinestone. Be careful not to damage any natural skin. Use a speed ranging from 7,000~15,000rpm</p>
	<p>Small barrel Carbide bit</p> <ul style="list-style-type: none"> Fine C 1713 Medium C 1714 <p>Small barrel white silver bit</p> <ul style="list-style-type: none"> Fine C 1713 W Medium C 1714 W Coarse C 1715 W 			<p>Under nail diamond bit</p> <ul style="list-style-type: none"> D 1712 	
	<p>Small barrel Carbide bit (Gold)</p> <ul style="list-style-type: none"> Fine C 1713 G Medium C 1714 G 			<p>Football diamond bit</p> <ul style="list-style-type: none"> Fine D 1713 Medium D 1714 Coarse D 1715 	
	<p>Tapered barrel Carbide bit</p> <ul style="list-style-type: none"> C 1710 Round C 1710 R 			<p>French fill diamond bit</p> <ul style="list-style-type: none"> D 1717 	<p>For cutting a new smile line. Use a speed ranging from 7,000~ 15,000rpm</p>
	<p>Oval Carbide bit</p> <ul style="list-style-type: none"> C 1720 			<p>Mini brush</p> <ul style="list-style-type: none"> WNHP 01 	<p>For cleaning and polishing the nail. Use a speed ranging from 2,500~4,500rpm</p>
	<p>Cone Carbide bit</p> <ul style="list-style-type: none"> Medium C 1716 Super fine C 1716 SF 	<p>Use these bits to remove material from the underside of the nail and create C-curve. Also, ideal for drill a hole for mounting rhinestone.</p>		<p>Chamois buffer</p> <ul style="list-style-type: none"> 4 CH 21 HP 	<p>Use a speed ranging from 2,000~5,000rpm</p>
	<p>Under nail Carbide bit</p> <ul style="list-style-type: none"> C 1717 Long C 1717 L 	<p>Be careful not to damage any natural skin. Use a speed ranging from 7,000~15,000rpm</p>		<p>Cotton buffer</p> <ul style="list-style-type: none"> CC 24 HP 	<p>Use a speed ranging from 2,000~5,000rpm</p>
	<p>Loose skin remover bit</p> <ul style="list-style-type: none"> 406 LRS-012 407 RS-012 	<p>Remove loose skin around the nail wall or cuticle area. Be careful not to damage any natural skin. Use a speed ranging from 7,000~ 15,000rpm</p>		<p>Art bit set</p> <ul style="list-style-type: none"> Drill ST 203 - 012 Cone square ST 38 - 018 Cone BH 24 P 	<p>Making a hole. 4,000~10,000rpm Making a hole bigger. 6,000~12,000rpm Finishing a hole. 6,000~12,000rpm</p>
	<p>Baby oval bit</p> <ul style="list-style-type: none"> C 1720 B <p>Baby cone bit</p> <ul style="list-style-type: none"> C 1716 B 	<p>Remove the hard skin around the nail bed and cleaning the detail spot. Be careful not to damage any natural skin. Use a speed ranging form 4,000~12,500rpm</p>		<p>Soft oval bit</p> <ul style="list-style-type: none"> DC102 	<p>For Preparation. 2,000~7,000rpm</p>
	<p>Cuticle Pusher</p> <ul style="list-style-type: none"> NF 01 	<p>For pushing back the cuticle. 2,500~4,500rpm</p>		<p>Mandrel</p> <ul style="list-style-type: none"> S 1710 <p>Sanding band</p> <ul style="list-style-type: none"> Fine S 1701 Medium S 1702 Coarse S 1703 	<p>As same use as barrel carbide bit.</p> <p>Sanding bands are easily replaceable. Ideal for gels. Safe and easy for beginners. Use a speed ranging from 2,000~ 15,000rpm</p>

Attachment for foot.

	Pedicure skin bit (S) b - 1	For removing corns and rough skin. Also ideal for removing heavy calluses. 10,000~20,000rpm		Rubber mandrel (Φ5) b - 5M	These mandrels hold cap sander of each size firmly.
	(M) b - 2			(Φ7) b - 7M	
	Gold (L) b - 3			(Φ10) b - 10M	
	Silver b - 3S			(Φ13) b - 13M	
	Gold (LL) b - 3L			(Φ16) b - 16M	
	White point a - 1	For polishing thumbnail. 7,000~12,000rpm		Cap Sander (Φ5) Coarse b - 5C	Smooth rough skin with these cap sanders. 5~10 Φ: 10,000~20,000rpm 13 Φ: 5,000~10,000rpm 16 Φ: 2,000~8,000rpm
	Pink point a - 2 P 1003	For smoothing nails except for thumbnail. 5,000~15,000rpm		(Φ7) Coarse b - 7C	
	Green point Small P 2002 Medium P 2003 Large P 2004	For removing a loose skin. 5,000~15,000rpm		(Φ10) Coarse b - 10C	
	Diamond bit Coarse BH - 60RC Fine BH - 60R	For removing calluses. 5,000~15,000rpm		(Φ13) Coarse b - 13C	For making smoother after using coarse grit. 5~10 Φ: 10,000~20,000rpm 13 Φ: 5,000~10,000rpm 16 Φ: 2,000~8,000rpm
	Silicon point Fine F 500 Coarse S - 100 Fine S - 180	For shinning and removing calluses. 5,000~15,000rpm		Cap sander (Φ5) Fine b - 5F	
		For smoothing the skin. 5,000~10,000rpm		(Φ7) Fine b - 7F	
		5,000~10,000rpm		(Φ10) Fine b - 10F	
				(Φ13) Fine b - 13F	
	Item name (Size) Grit Item number	Applications Precautions & Features		(Φ16) Fine b - 16F	

Attachment for maintenance.

	Dressing tool DD200	For removing sharp edge of carbide for safety purpose. Also, effective for sharpen the white point, pink point, green point and silicon point when they were worn out. 5,000~10,000rpm		How to use			
			Dress the surface of bit Touch the bit horizontally	Dress the top of the bit Touch the bit vertically	Remove the edge Touch the bit 45 degree angle	Remove the edge Touch the bit 45 degree angle	Remove the edge of carbide bit Remove the edge Touch the bit 45 degree angle
	Bit cleaner set E 2611 ST	For cleaning and remove dust of the bit.	How to use the bit cleaner brush				
	Bit cleaner brush E 2611	Please avoid the bit touching finger while cleaning.			Set the bit cleaner brush into the holder (as a bit cleaner set). Then, touch the bit.	Touch the bit cleaner while bit is rotating with low speed.	

	Basic nail bit set PBS5	C1702W,C1710,C1716 ST203-012 S1710,S1703		Basic foot bit set KBS6	b-2,a-1,a-2,b-5M,b-10M,b-13M b-5C,b-5F,b-10F,b-13C,b-13F		Bit stand KZ11 - 101		Bit case (for 20 pcs) BBC 20		Bit case (for 120 pcs) BBC 120
--	----------------------------	--	--	----------------------------	---	--	-------------------------	--	---------------------------------	--	-----------------------------------



12 Kwarai-Cho, Kuki-Shi Saitama-Ken 346-0028 Japan
TEL: +81-480-24-1751 FAX: +81-480-22-0915
<http://www.urawa.co.jp>